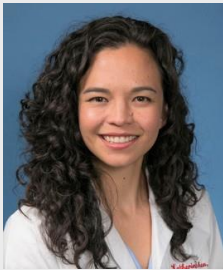


# UCLA Housing, Neighborhood and Health Series

## "Housing Instability, Evictions, and Population Health Consequences of the COVID-19 Pandemic"

**Monday, March 1, 2021**  
**11:30AM - 12:30PM Pacific Time**  
**via Zoom Webinar**



### **Katherine Chen, MD**

Fellow, National Clinical Scholars Program  
PhD Student, Health Policy and Management  
University of California, Los Angeles

[\*Unmet Medical Needs Among Adults Who Move due to Unaffordable Housing: Evidence from California\*](#)

Even before the COVID-19 pandemic, the emergence of a housing affordability crisis in California threatened a growing number of families with residential displacement. Dr. Chen will present data from the California Health Interview Survey (2011-2017) showing that people who have moved because of unaffordable housing costs are at increased risk for not receiving the medical care and medications they need. These findings highlight an opportunity to improve population health during and after the pandemic by improving access to stable, affordable housing.



### **Kathryn Leifheit, PhD MSPH**

Postdoctoral Fellow, Health Policy and Management  
UCLA Fielding School of Public Health

[\*Evictions, COVID-19 and mental distress: Quasi-experimental studies of state eviction moratoriums and population health during a pandemic\*](#)

The COVID-19 economic crisis has rendered millions of U.S. households unable to pay rent, placing them at risk for eviction. Dr. Leifheit will present a set of studies leveraging variation in state eviction moratoriums to measure associations between evictions and 1) COVID-19 incidence and mortality and 2) population mental distress during the pandemic. Together, these studies illustrate a role for tenant protections in mitigating population health consequences of COVID-19.



*This Critical Issues Seminar is a joint endeavor brought to you by the UCLA Ziman Center for Real Estate's Housing as Health Care Initiative and Levine Program in Housing and Social Responsibility in partnership with the Center for Health Advancement at the UCLA Fielding School of Public Health.*

For questions, contact Christina Green at [christina.green@anderson.ucla.edu](mailto:christina.green@anderson.ucla.edu)  
zimancenter.ucla.edu  
110 Westwood Plaza, B100, Los Angeles, CA 90095-1481